



PRODUCT RANGE EXPORT

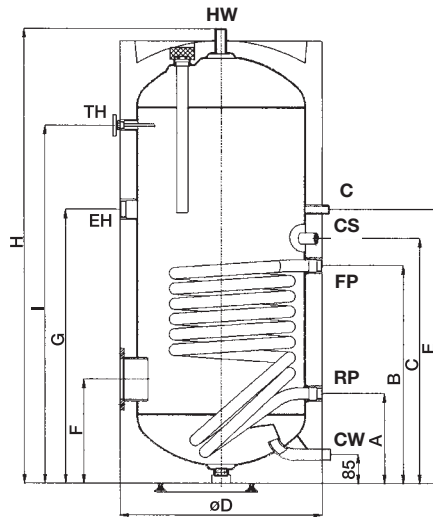
AE
Austria Email

Warmth you can feel.

Auxiliary storage tank with foil jacket with a single heat exchanger



- Large heat exchanger surfaces
- Sealed, high performance bare-tube heat exchanger (lime resistant)
- DIN 4753-compliant enamelling and Mg anode
- High-quality PU-insulation, 100% CFC-free, 50 mm
- Upward outflow of hot water ensures complete ventilation



- TH ... 1/2" IT Thermometer
- EH ... 1 1/2" IT screw in heater sleeve
- Z ... 3/4" ET circulation (1" with HT 500 ERM)
- CS ... 1/2" IT control sleeve
- FP ... 1" IT boiler flow pipe
- RP ... 1" IT boiler return pipe
- HW ... 1" ET hot water outflow
- CW ... 1" ET cold water inflow
- Flange: Ø 180 mm

- Factory-mounted thermometer, blank flange (D 180 mm, NS 110) and flange insulating cover
- All storage tanks incl. 1 1/2" sleeves (factory-sealed) for SH-series screw-in heaters
- Sensor-positioning via dip tube (control sleeve)
- Accessories: KR charge pump controller
- Foil jacket included to reduce stock inventory (available in different colours)
- Height-adjustable feet (included)

Storage tank model	A mm	B mm	C mm	Ø D mm	E mm	F mm	G mm	H mm	I mm	Anode mm	Diagonal height mm	Weight kg	IDS ¹⁾ mm	IDF ²⁾ mm
HT 160 ERM	263	503	563	610	618	305	668	1111	724	Ø 33 x 300	1192	76	520	420
HT 200 ERM	263	636	718	610	803	305	803	1339	1050	Ø 33 x 430	1394	88	520	420
HT 300 ERM	263	836	898	610	963	305	983	1790	1507	Ø 33 x 480	1838	115	520	420
HT 400 ERM	320	880	960	680	1000	345	983	1839	1521	Ø 33 x 600	1894	145	590	490
HT 500 ERM	370	930	1010	760	1095	425	1095	1853	1498	Ø 33 x 700	1920	160	670	580

¹⁾ Installation depth of screw-in heater sleeve for SH heater

²⁾ Installation depth of flange for immersion heater or finned tube heat exchanger

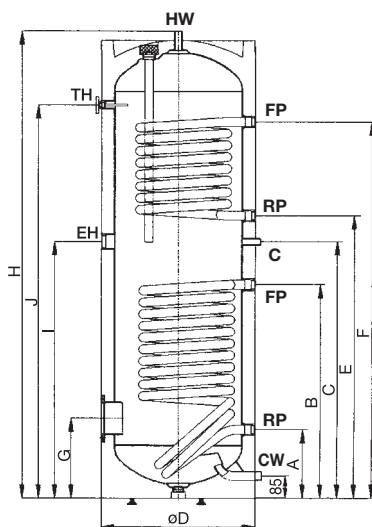
	Heating surface in m ²	Flow rate capacity in kW or l/h												Radiation loss ³⁾	N _L -number
		70°C	70°C	70°C	80°C	80°C	80°C	70°C	70°C	70°C	80°C	80°C	80°C		
Flow temperature		70°C	70°C	70°C	80°C	80°C	80°C	70°C	70°C	70°C	80°C	80°C	80°C		80°C
Hot water temp.		45°C	45°C	45°C	45°C	45°C	45°C	60°C	60°C	60°C	60°C	60°C	60°C		60°C
Cold water temp.		10°C	10°C	10°C	10°C	10°C	10°C	10°C	10°C	10°C	10°C	10°C	10°C		10°C
Flow rate		1 m ³ /h	2 m ³ /h	3 m ³ /h	1 m ³ /h	2 m ³ /h	3 m ³ /h	1 m ³ /h	2 m ³ /h	3 m ³ /h	1 m ³ /h	2 m ³ /h	3 m ³ /h		3 m ³ /h
HT 160 ERM	0.57	11.9	13.9	14.9	15.6	18.5	19.8	8.5	9.7	10.3	12.5	14.7	15.7	1.6	2
		293	342	367	384	455	487	146	167	177	215	253	270		
HT 200 ERM	0.91	18.0	21.7	23.5	23.3	28.4	31.0	13.2	15.5	16.6	19.1	22.9	24.8	1.8	3.5
		443	534	578	573	699	763	227	267	286	329	394	427		
HT 300 ERM	1.40	23.0	30.1	31.8	29.8	39.1	42.7	17.1	20.9	22.4	24.8	31.0	33.9	2.2	7.5
		566	740	782	733	962	1050	294	360	386	427	534	584		
HT 400 ERM	1.76	27.2	34.8	38.9	35.1	45.1	50.7	20.4	25.5	27.5	29.3	37.1	41.2	2.5	11
		669	856	957	863	1109	1247	351	439	474	505	639	709		
HT 500 ERM	1.95	29.8	39.2	44.2	38.3	51.2	58.1	21.9	27.2	29.5	31.7	42.1	48.1	2.7	15
		733	964	1087	942	1260	1429	377	468	508	546	725	828		

³⁾ according to DIN 44 532 in kWh/24h

Solar storage tank with foil jacket with two heat exchangers



- Large heat exchanger surfaces
- Sealed, high performance bare-tube heat exchanger (lime resistant)
- DIN 4753-compliant enamelling and Mg anode
- High-quality PU-insulation, 100% CFC-free, 50 mm
- Upward outflow of hot water ensures complete ventilation



- TH ... 1/2" IT Thermometer
- EH ... 1 1/2" IT screw in heater sleeve
- Z ... 3/4" ET circulation (1" with HT 500 ERMR)
- FP ... 1" IT boiler flow pipe
- RP ... 1" IT boiler return pipe
- HW ... 1" ET hot water outflow
- CW ... 1" ET cold water inflow
- Flange: Ø 180 mm

- Factory-mounted thermometer, blank flange (D 180 mm, NS 110) and flange insulating cover
- All storage tanks incl. 1 1/2" sleeves (factory-sealed) for SH-series screw-in heaters
- Variable sensor positioning (sensor tube)
- Accessories: ATR charge pump controller combination
- Foil jacket included to reduce stock inventory (available in different colours)
- Height-adjustable feet (included)

Storage tank model	A mm	B mm	C mm	Ø D mm	E mm	F mm	G mm	H mm	I mm	J mm	Anode mm	Diagonal height mm	Weight kg	Heat exchanger content l top/bottom	IDS ¹⁾ mm	IDF ²⁾ mm
HT 300 ERMR	263	836	963	610	1083	1443	305	1790	983	1507	Ø 33 x 600	1838	131	5.9/8.9	520	420
HT 400 ERMR	320	880	1000	680	1100	1460	345	1839	983	1521	Ø 33 x 700	1894	158	5.9/11.5	590	490
HT 500 ERMR	370	930	1095	760	1195	1465	370	1853	1095	1496	Ø 33 x 800	1920	172	6.2/12.6	670	580

¹⁾ Installation depth of screw-in heater sleeve for SH heater

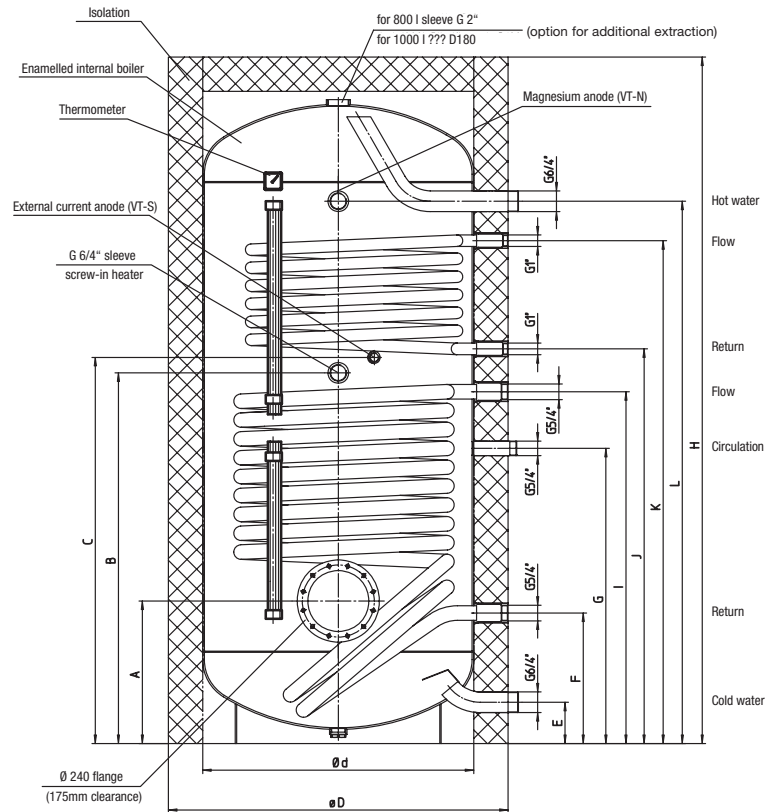
²⁾ Installation depth of flange for immersion heater or finned tube heat exchanger

	Heating surface in m ²	Flow rate capacity in kW or l/h												Radiation loss ³⁾	N _L -number
		70°C	70°C	70°C	80°C	80°C	80°C	70°C	70°C	70°C	80°C	80°C	80°C		
Flow temperature		70°C	70°C	70°C	80°C	80°C	80°C	70°C	70°C	70°C	80°C	80°C	80°C		80°C
Hot water temp.		45°C	45°C	45°C	45°C	45°C	45°C	60°C	60°C	60°C	60°C	60°C	60°C		60°C
Cold water temp.		10°C	10°C	10°C	10°C	10°C	10°C	10°C	10°C	10°C	10°C	10°C	10°C		10°C
Flow rate		1 m ³ /h	2 m ³ /h	3 m ³ /h	1 m ³ /h	2 m ³ /h	3 m ³ /h	1 m ³ /h	2 m ³ /h	3 m ³ /h	1 m ³ /h	2 m ³ /h	3 m ³ /h		3 m ³ /h
HT 300 ERMR	1.40	23.0	30.1	31.8	29.8	39.1	42.7	17.1	20.9	22.4	24.8	31.0	33.9	2.3	7.5
bottom		566	740	782	733	962	1050	294	360	386	427	534	584		
HT 300 ERMR	0.93	16.6	20.2	21.8	21.9	26.7	29.1	12.2	14.4	15.7	18.1	21.7	23.6	2.3	1.8
top		408	497	536	539	657	716	210	248	270	312	374	406		
HT 400 ERMR	1.76	27.2	34.8	38.9	35.1	45.1	50.7	20.4	25.5	27.5	29.3	37.1	41.2	2.5	11
bottom		669	856	957	863	1109	1247	351	439	474	505	639	709		
HT 400 ERMR	0.93	16.7	20.0	21.5	21.6	26.1	28.2	12.4	14.5	15.4	18.0	21.4	23.0	2.5	3
top		411	492	529	531	642	694	214	250	265	310	369	396		
HT 500 ERMR	1.95	29.8	39.2	44.2	38.3	51.2	58.1	21.9	27.2	29.5	31.7	42.1	48.1	2.8	15
bottom		733	964	1087	942	1260	1429	377	468	508	546	725	828		
HT 500 ERMR	0.96	16.2	19.6	20.9	20.3	25.0	27.5	11.4	13.5	14.0	16.8	19.9	21.0	2.8	3.7
top		399	482	514	499	615	677	196	232	241	289	343	362		

³⁾ according to DIN 44 532 in kWh/24h

Large, multi-purpose storage tank with 2 heat exchangers

800 and 1000-litre FRMR models with insulation



Equipment:

- Internal steel boiler, enamelled according to DIN 4753. with built-in magnesium rod anode (VT-N) or external current anode (VT-S)
- Outer jacket and heat insulation: 90 mm XPS modular insulation with polystyrene jacket in silver-grey (2 jacket panels) Optional soft-foam insulation: 100 mm with plastic outer jacket in silver-grey also available.
- Operating pressure: max. 10 bar (VT-S) or 6 bar (VT-N) for containers, max. 10 bar for heating heat exchanger
- These upright, heat exchanger storage tanks have a large-surface tube heat exchanger to allow double or triple operation while connected to boiler pump, solar pump, heat pump or district heating systems.
- Both tube heat exchangers are sealed and enamelled directly into the boiler.
- The bottom of the tube heat exchanger, which is embedded in the ground, provides improved efficiency and optimal floor-heating, thereby destroying any bacteria (Legionella) from the cold water.
- Profiles are attached along the boiler jacket to mount sensors for control (variable sensor positioning depending on system)
- To facilitate inspection and cleaning as well as to allow combination with a finned tube heat exchanger, this multipurpose, heat exchanger upright storage tank is equipped with a Ø 240 mm side flange.

- ATH thermometer included
- Furthermore, a screw-in heater can be installed in the 1 1/2" sleeve for additional or post heating.
- Drained via cold water pipe
- 1 1/2" ET cold and hot water connection
- 1 1/4" ET circulation connection

Accessories:

- ATH/ATR, external current anode (maintenance-free!), reduction screws for external current anode, SH screw-in heater; reduction flange from Ø 240 mm to Ø 180 mm, RDW/RSW flange immersion heater, RWT finned tube heat exchanger.

Model	Nominal content litre	Measurements in mm												Tube heat exchanger, bottom			Tube heat exchanger, top			N _L -number acc. to DIN 4708	Diagonal height mm	Weight kg	
		H	max. øD	ød	A	B	C	E	F	G	I	J	K	L	Heating surface m ²	Content Litres	Tube dimension mm	Heating surface m ²	Content Litres				Tube dimension mm
VT-N 800 FRMR	800	2000	1000	790	415	1080	1125	120	380	860	1025	1150	1465	1580	2.00	13.1	ø 33.7	1.2	7.8	ø 33.7	9/21	1960	269
VT-S 800 FRMR	800	2000	1000	790	415	1080	1125	120	380	860	1025	1150	1465	1580	2.76	22.5	ø 42.4	1.2	7.8	ø 33.7	9/24	1960	326
VT-N 1000 FRMR	980	2350	1000	790	415	1255	1300	120	380	1025	1190	1335	1785	1920	2.40	15.7	ø-33.7	1.2	7.8	ø 33.7	11/26	2300	294
VT-S 1000 FRMR	950	2350	1000	790	415	1255	1300	120	380	1025	1190	1335	1785	1920	3.51	28.6	ø 42.4	1.2	7.8	ø 33.7	11/33	2300	350

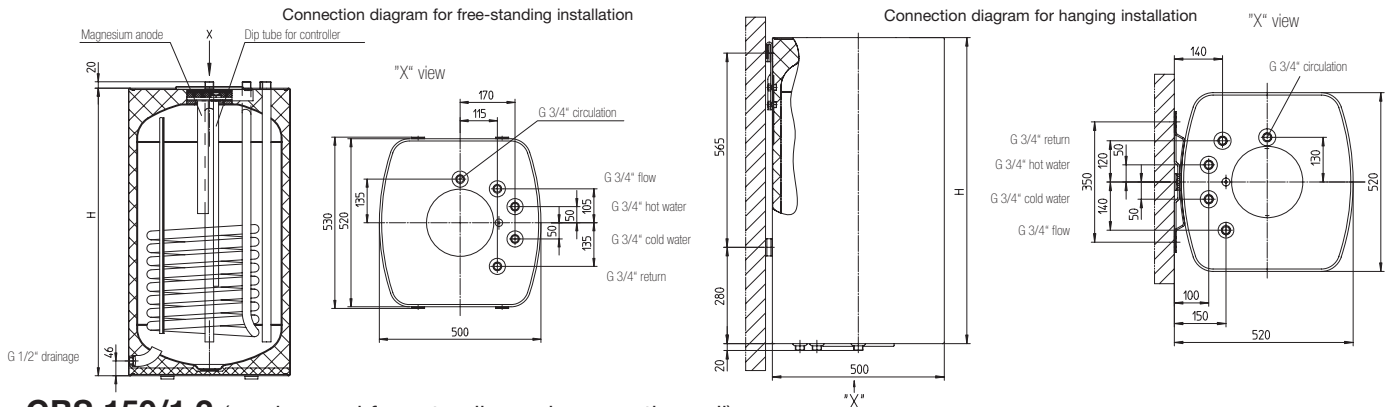
Auxiliary gas storage tank GBS



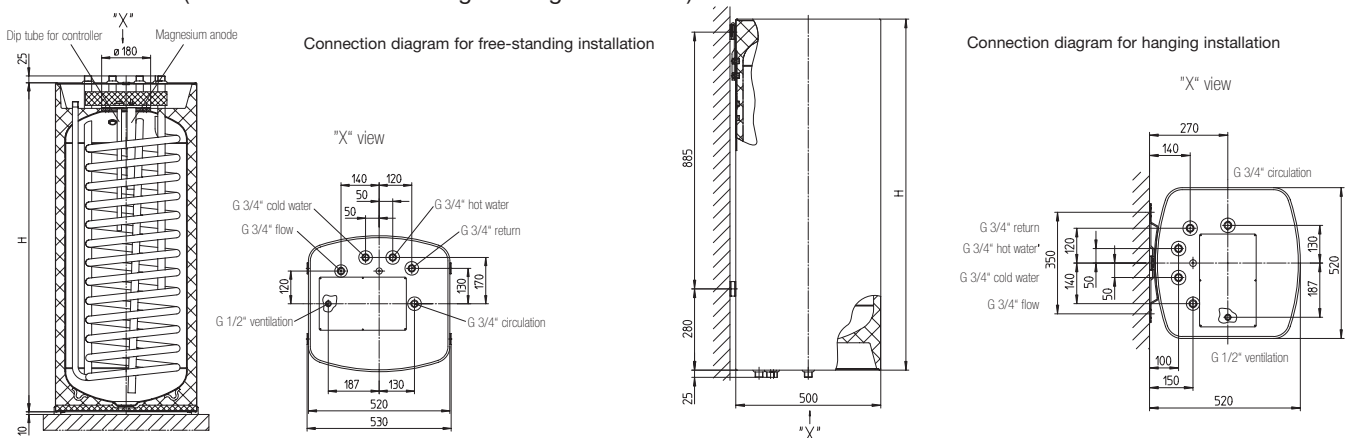
Equipment:

- Corrosion-resistant, enamelled construction in compliance with DIN 4753 T3
- Magnesium sacrificial anode mounted on flange
- High-quality heat insulation made of CFC and HCFC-free PU foam
- Internal boiler laid in foam directly on the outer covering (prevents chimney effect from joints and pipe ducts)
- Outer jacket made of powder-coated sheet steel (white)
- Flange (top) with built-in Mg anode and mounted dip tube (Ø 15 mm) for attaching boiler sensor
- GBS 150/1.2 with heat exchanger ventilation feature
- Large-surface tube heat exchanger, which is sealed and enamelled directly, ensures the best possible heat transfer
- Draining sleeve with closed brass plugs for attaching a draining valve
- Adjustable feet included
- GBS 115/1.2 and GBS 150/1.2 can be used free-standing or hung on a wall (GBS 115/0.8 and GBS 200/1.3 for free-standing use only)
- G 3/4" circulation pipe

GBS 115/0.8 und GBS 200/1.3 (free-standing use only), GBS 115/1.2 (can be used free-standing or hung on the wall)



GBS 150/1.2 (can be used free-standing or hung on the wall)

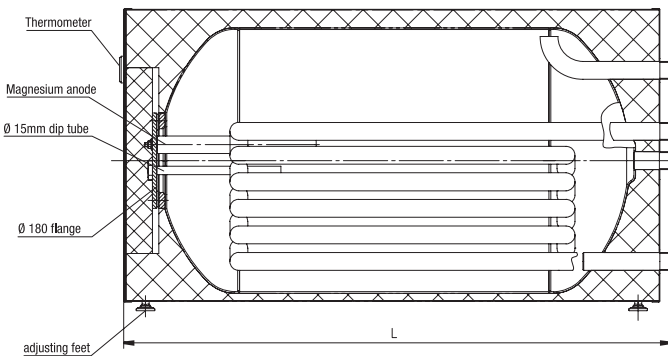


Model	Nominal content litre	Operating pressure bar	Service water connection CW + HW	Heating connections FP + RP	Circulation connection C	Flange Ø mm	Tube heat exchanger surface m ²	Drain sleeve	Unit height	Weight kg	SEC*	N _L -number acc. to DIN 4708
GBS 115/0.8	115	max. 6	ET 3/4"	ET 3/4"	ET 3/4"	180	0,8	IT 1/2"	890	80	1.4	1.5
GBS 115/1.2	115	max. 6	ET 3/4"	ET 3/4"	ET 3/4"	180	1,2	IT 1/2"	890	86	1.4	1.7
GBS 150/1.2	150	max. 6	ET 3/4"	ET 3/4"	ET 3/4"	180	1,2	IT 1/2"	1210	96	1.7	3.0
GBS 200/1.3	200	max. 6	ET 3/4"	ET 3/4"	ET 3/4"	180	1,3	IT 1/2"	1480	145	2.3	4.5

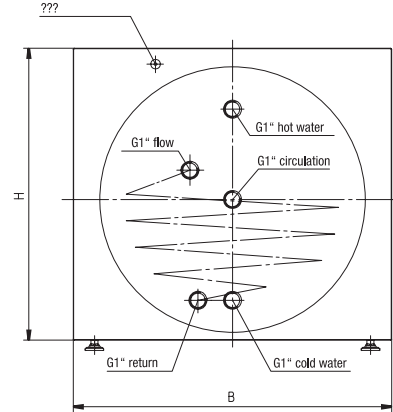
*Stand-by energy consumption in kWh/24 according to DIN 44532

Horizontal storage tank

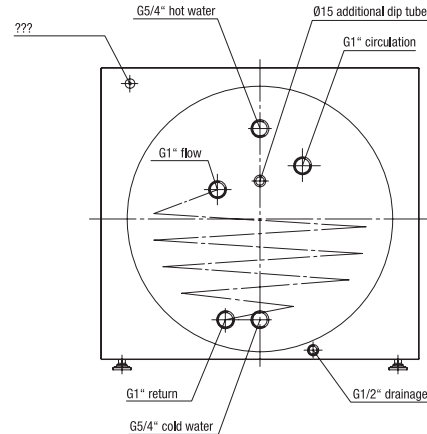
Auxiliary horizontal storage tanks are designed for boiler rooms with special space requirements. With a properly designed construction, the heating boiler can be mounted directly onto the storage tank so that both components form a single compact unit.



Connection diagram for LSP 150 and 200



Connection diagram for LSP 350 and 500



- Internal boiler is protected against corrosion thanks to the high-quality, DIN 4753-compliant enamelling and magnesium sacrificial anode; an external current anode is mounted on the LSP 350 and 500 models.
- High-quality heat insulation made of PU foam (CFC-free). The horizontal storage tank models have a directly-foamed internal boiler and a removable outer covering.
- Advantage: lower energy loss
- Furnace-varnished, powder-coated outer steel jacket (choice of colours)
- Operating pressure: 10 bar for container, max. 10 bar for heat exchanger
- This storage tank model has a specially-designed trapezoidal tube heat exchanger that allows optimal water layering and is self-ventilating and self-draining.
- The tube heat exchanger is sealed and enamelled directly into the boiler

- Thermometer attached
- Cable duct present
- This device has a frontal flange with Ø 180 mm to facilitate inspection and cleaning and to mount anode and dip tubes for the thermometer and control sensor.
- Drained via cold water pipe
- The cold and hot water connection as well as flow and return pipes have external threading

Accessories:

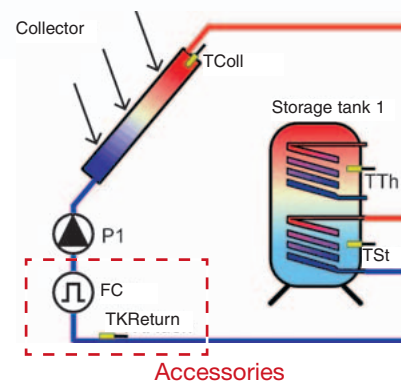
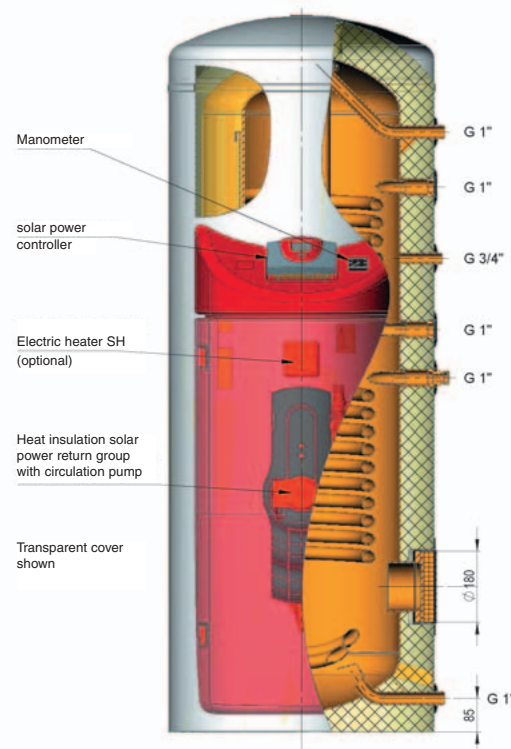
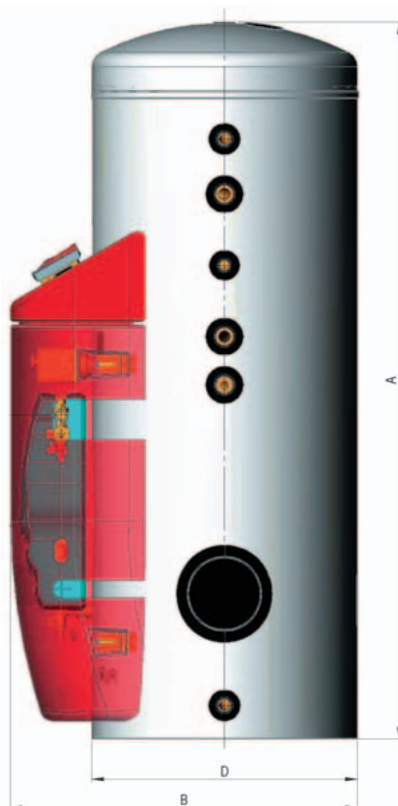
- External current anode add-on kit for LSP 150 and 200
- ATR

Model	Nominal content litres	Measurements in mm			Dead weight (without packaging) in kg	Max. boiler weight in kg	Heating surface in m ²	Heat exchanger content in litres	Radiation loss* in kWh / 24h	N.-number acc. to DIN 4708
		H	B	L						
LSP 150	150	550	600	1030	83 / 95	300	0.55 / 0.95	3.0 / 4.0 / 5.2	1.5	1.5 / 2.0
LSP 200	200	550	600	1295	108 / 114	300	0.95 / 1.25	4.0 / 5.2 / 6.7	1.7	4 / 4.5
LSP 350 / 1.6	350	752	752	1450	215	900	1.6	10.2	1.6	9
LSP 500 / 2.0	500	752	752	1750	251	900	2.0	12.7	2.1	16

* compliant with DIN 44532

SUNBAG solar storage tank

This storage tank is specially designed for use in solar power systems and comes with all the components necessary for solar operation. Extremely strong insulation provides minimal radiation or heat losses within the storage tank.

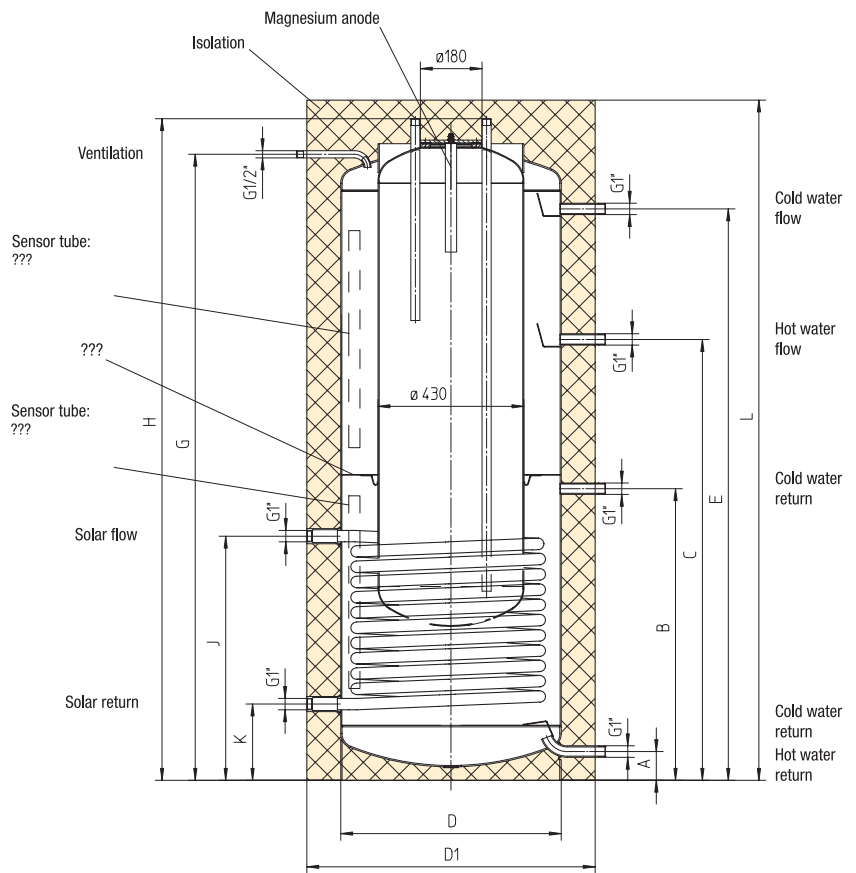


- Optimal corrosion-protection due to VACUMAIL® double-coated enamelling
- Optimal heat transfer due to enamelled tube heat exchanger
- CFC and HCFC free, PU insulation foamed directly without thermal bridges for minimal energy/radiation losses
- Optimal adaptation of storage tank to the solar power system
- RPM-regulated pump allows optimal energy gain during low to high temperature operation
- Easy maintenance thanks to large flange openings
- Simple replacement of rod anode without requiring the storage tank to be drained
- Well-designed hydraulic/control unit on the storage tanks makes installation easy
- System dimensioned by manufacturer
- Minimal electric installation through wired solar power controller and wired mains cable
- Solar power controller for illustrated hydraulic diagram

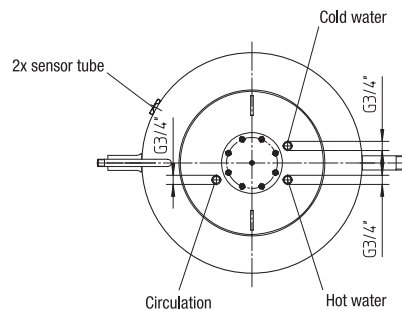
- Accessories already integrated into storage tank: manometer, BLF blank flange + FD flange seal + ISO insulating hood, mounted solar power return group including circulating pump, shut-off and safety devices (6-bar safety valve), completely wired controller, clamping ring connection on the solar heat exchanger flow
- Additional accessories (optional): immersion heater, SH screw-in heaters, SG-3/4" safety group, external current anode, yield measurement of solar power system, over-voltage protection for collector sensor.

Model	Nominal content litre	Measurements in mm			Flange diameter mm	?	Heat exchanger top		Heat exchanger / finned tube heat exchanger (RWT) bottom		Weight kg	Stand-by energy consumption in kWh / 24h	Dia- gonal height mm
		A	B	D			heating surface m ²	content Liter	heating surface m ²	content Liter			
SUNBAG 300 FRMR	290	1807	875	670	180	545	0.93	5.5	1.4	8.2	182	1.91	1870
SUNBAG 400 FRMR	380	1836	955	750	180	615	0.93	5.5	1.8	10.0	216	2.38	1940
SUNBAG 500 FRMR	500	1818	995	790	180	695	0.93	5.5	2.0	11.5	236	2.43	1905

Storage tank within storage tank system SISS



- V** = 1/2" ET ventilation
- TS** = 1/2" IT thermometer sleeve
- HFP** = 1" ET heat flow pipe
- BFP** = 1" ET boiler flow pipe
- HRP** = 1" ET heater return pipe
- BRP** = 1" ET boiler return pipe
- CW** = 3/4" ET cold water pipe
- HW** = 3/4" ET hot water pipe
- C** = 3/4" ET circulation

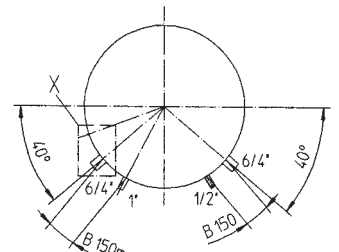
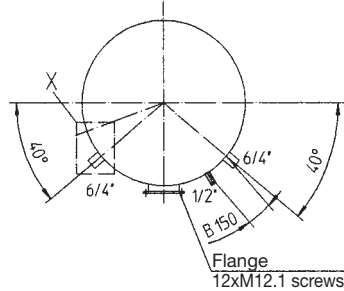
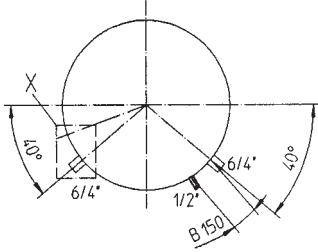
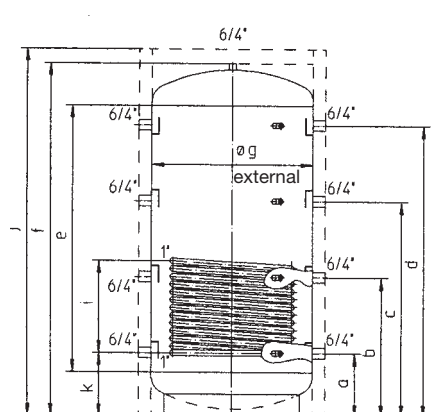
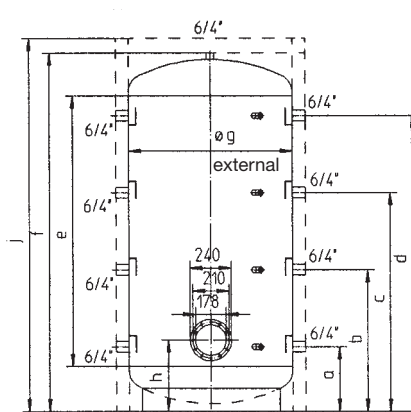
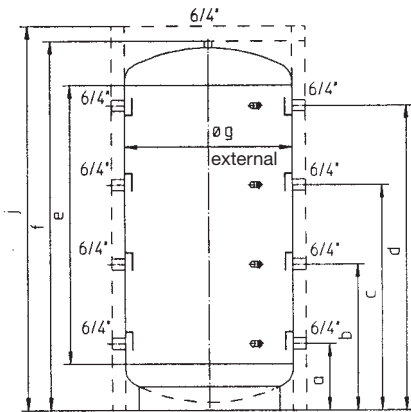


- The SISS upright solar storage tank combines a heat buffer storage tank with a service water storage tank
- Each 550, 750, 900 or 1100-litre heat buffer storage tank with black varnishing has a sealed-in 150, 200 or 250-litre service water tank with DIN 4753-compliant enamelling.
- A large-surface, high-performance bare-tube heat exchanger (2 to 3.45 m²) is sealed directly into the buffer storage tank to ensure the most efficient heat transfer
- Variable sensor positioning possible by means of 2 sensor tubes
- A wide variety of heat sources (heat boiler, collector, heat-pump, tiled stoves) can be connected without problems
- Heat insulation: 100 mm soft foam with plastic outer jacket in silver-grey

- A reconnectable flange immersion heater with 7.5/5/2.5 kW can be mounted in the service water storage tank from above
- Drained via cold water pipe
- Operating pressure: 6 bars in service water storage tank, 3 bars in heat buffer storage tank
- Operating temperatures: max. 95°C for service water and heat buffer storage tanks, max 110° for heat exchanger
- The SISS can be connected to a variety of heating devices such as a radiator or floor heating system
- Accessories: AS active layering system
EBH-SISS immersion heater

Model	Measurements in mm											Diagonal height in mm	Heat exchanger heating surface in m ²	Content tube heat exchanger in l	Weight in kg	N _c -number acc. to DIN 4708
	A	B	C	D	D1	E	F	H	J	K	L					
SISS 550/150	85	880	1210	650	850	1540	1770	1890	825	310	1970	1935	2.00	13.0	186	4.0
SISS 750/150	95	970	1170	790	990	1500	1767	1877	940	335	1905	2000	2.55	16.7	218	4.0
SISS 900/200	95	1175	1375	790	990	1750	1982	2092	1047	335	2120	2200	3.15	20.7	256	6.5
SISS 1100/250	85	1010	1425	850	1050	1840	2060	2166	945	270	2245	2220	3.45	22.4	294	9.0

Solar and heat buffer storage tank Measurements



PSM – buffer storage tank with 6/4" connecting sleeves
(500 l, 800 l, 1000 l, 2000 l, 3000 l and 5000 l)

PSF – PSM buffers storage tank with D 240 flange
(500 l, 800 l, 1000 l, 2000 l, 3000 l and 5000 l)

PSF – PSM buffers storage tank with tube heat exchanger
(500 l, 800 l, 1000 l, 2000 l, 3000 l and 5000 l)

Additional models (such as PSRF) and special sizes available upon request!

Nominal content	Measurements in mm											Diagonal height [mm]	Weight [kg]	? [m ²]	? [l]
	a	b	c	d	e	f	g	h	i	j	k				
500 l	220	620	1010	1390	1250	1640	ø650	340	900	1725	220	1670	108	2.3	11
800 l	260	630	1030	1430	1250	1700	ø790	390	670	1785	260	1750	161	2.7	15
1000 l	310	745	1250	1710	1500	2050	ø790	390	720	2135	310	2070	176	3	19
1500 l	380	825	1350	1760	1500	2150	ø1000	415	800	2235	375	2270	205	3.6	22
2000 l	320	900	1490	2020	1800	2380	ø1100	423	800	2465	320	2610	231	4.2	26
3000 l	380	1020	1680	2330	2080	2760	ø1250	470	1050	2845	380	2950	310	4.2	26
5000 l	400	1100	1810	2520	2300	2935	ø1600	640	1000	3035	580	3140	450	6.0	37



Zentrale und Werk

Austria Email AG

8720 Knittelfeld, Austriastrasse 6
Phone +43 3512 700-0, Fax +43 3512 700-239
Internet: www.austria-email.at
E-Mail: office@austria-email.at

Kundendienst:

Phone +43 3512 700-297
E-Mail: kundendienst@austria-email.at

Verkaufsstandorte in Deutschland:

Brandenburg (Verkaufsbüro)

Am Industriegelände 3
D-14772 Brandenburg/Havel
Phone +49 3381 766-0
Fax +49 3381 766-244
E-Mail: sgobi@austria-email.at

Weiden (Verkaufsbüro und Lager)

Parksteiner Strasse 49
D-92637 Weiden/Oberpfalz
Phone +49 961 634 90-0
Fax +49 961 634 90-30
E-Mail: kschmitt@austria-email.at